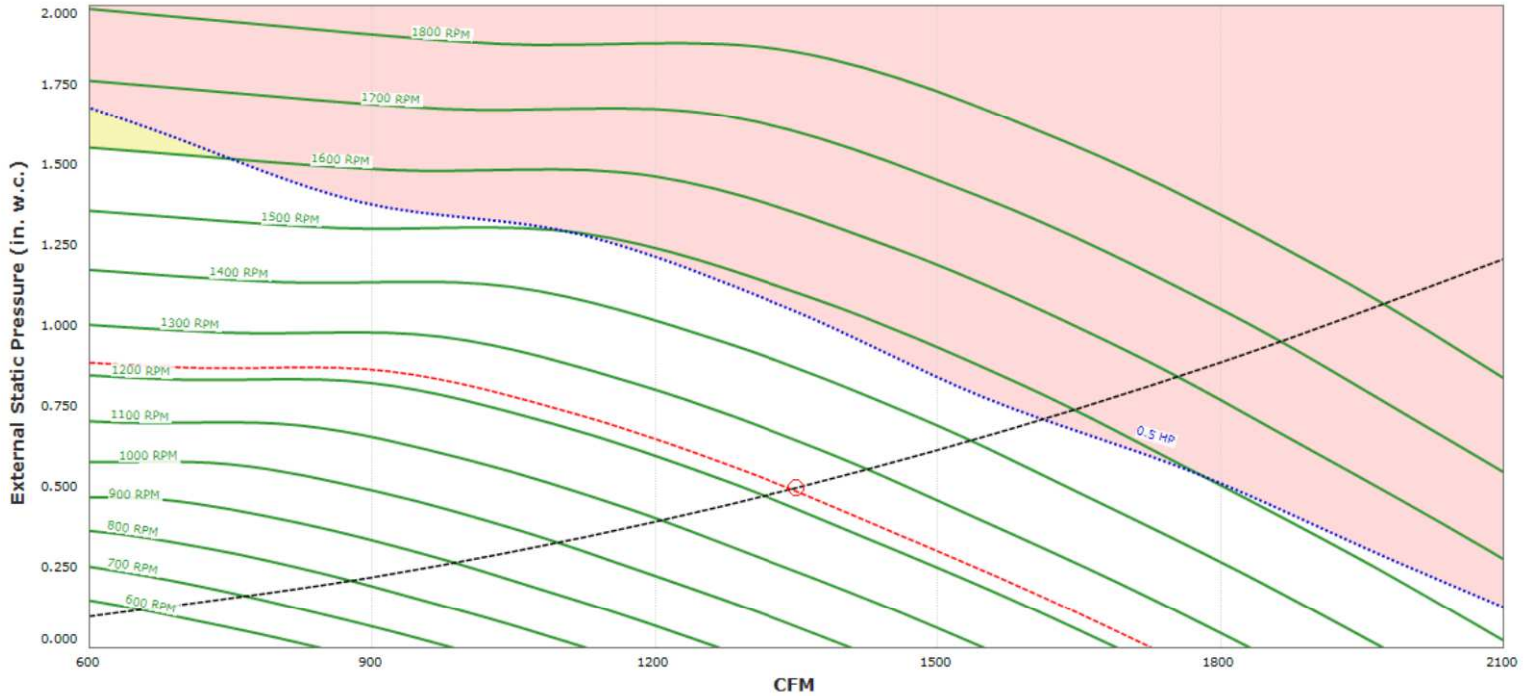




DU50HK (#2) DU50 .5hP-1350CFM208 Weight: 106 lbs.



High Speed Direct Drive Centrifugal Upblast Exhaust Fan with speed control (speed control included for single phase only), disconnect switch and 13-3/4" wheel.



### EXHAUST MOTOR

Model BMN48-37511-ES-M52-CA-60-115 • 0.500 HP • 1 Phs • 115 V • 60Hz • 6.3 FLA • TEAO-ECM (Totally Enclosed Air Over Electronically Commutated Motor)

### EXHAUST PERFORMANCE

Volume:	1350 CFM	RPM:	1226	TS:	4413 ft/min
Static Pressure:	0.500" w.g.	BHP:	0.286	Discharge Velocity:	513 FPM
Altitude:	0'	Ambient Temp:	70.0°F	FEI:	1.431

### CONSTRUCTION FEATURES

- Housing constructed of heavy gauge aluminum
- Centrifugal backward inclined, non-overloading wheel
- Weatherproof safety disconnect switch
- Grease spout welded to housing
- Vibration isolators
- Continuous duty, thermal protected, permanently lubricated, direct drive motor
- Forces fresh air through motor to ensure long motor life
- Variable Speed Control on Single Phase Units Only. (VFDs required to adjust speed for 3 phase versions)
- Corrosion resistant fasteners
- Thermal overload protection
- High heat operation (400 °F)
- Rated for restaurant and general ventilation applications
- Grease classification tested

### EXHAUST INSTALLATION INFORMATION

Unit Voltage:	1 phs 115 V 60Hz
Unit Main Input	7.9 Amps MCA • 15 Amps MOP • 115 V • 14 AWG Wire Min.
SCCR:	10 kAmp

### CONFIGURED OPTIONS

- Full crating for exhaust fans for shipping.
- ECM Wiring Package and Manual or 0-10VDC Control for Exhaust EC motors. RTC Controller (No harness when ordered as a part).

**DU50HK SOUND (1226 RPM) AT 5 FT. IN OCTAVES:**

1	2	3	4	5	6	7	8
70.3	75.2	76.7	69.8	66.2	63.8	58	49
LWA:	73	Sones:	10.2	DBA:	61.5		

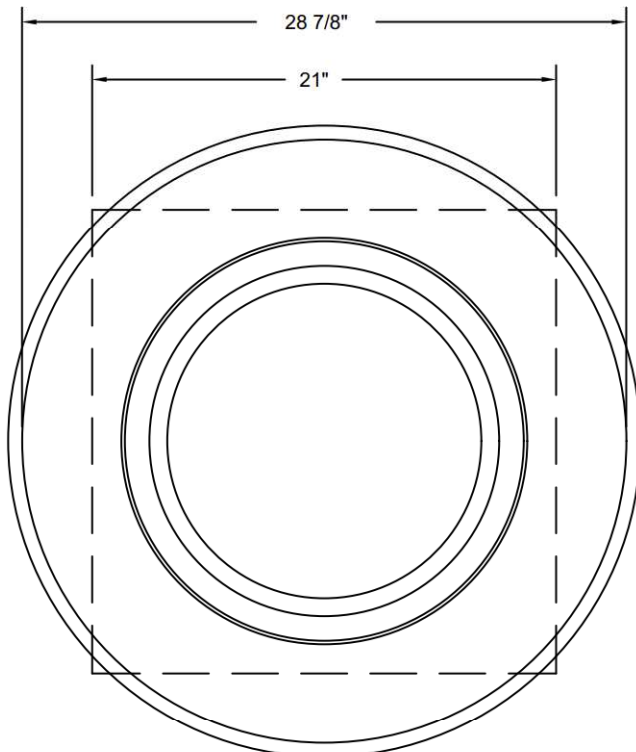
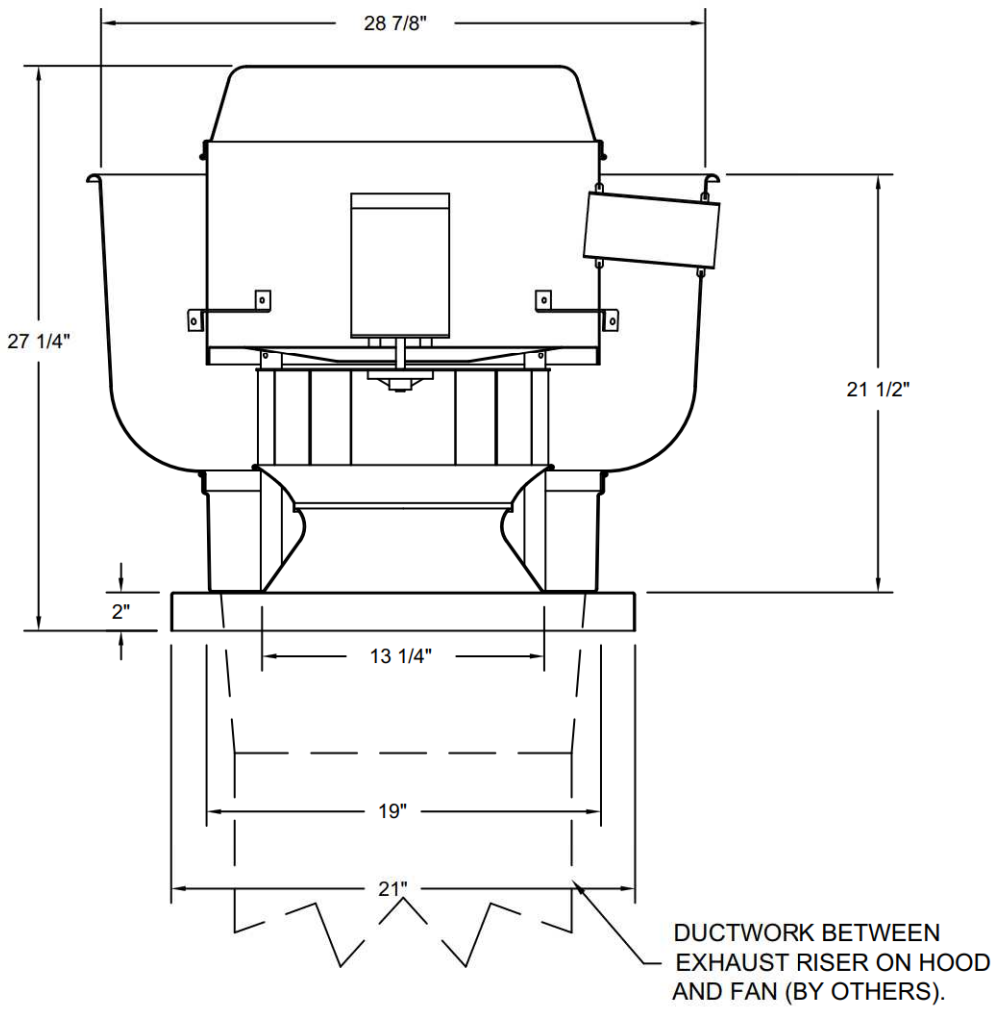
Note: Sound data across operational range. Tested in accordance to AHRI Standard 270/370.

## FEATURES:

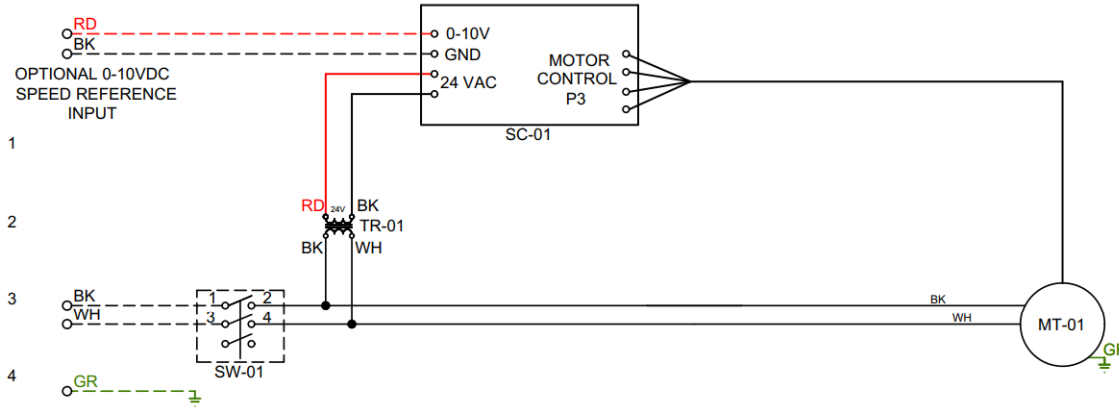
- DIRECT DRIVE CONSTRUCTION (NO BELTS/PULLEYS).
- ROOF MOUNTED FANS.
- RESTAURANT MODEL.
- UL705
- VARIABLE SPEED CONTROL.
- INTERNAL WIRING.
- THERMAL OVERLOAD PROTECTION (SINGLE PHASE).
- HIGH HEAT OPERATION 300°F (149°C).
  
- NEMA 3R SAFETY DISCONNECT SWITCH.

### NORMAL TEMPERATURE TEST

EXHAUST FAN MUST OPERATE CONTINUOUSLY WHILE EXHAUSTING AIR AT 300°F (149°C) UNTIL ALL FAN PARTS HAVE REACHED THERMAL EQUILIBRIUM, AND WITHOUT ANY DETERIORATING EFFECTS TO THE FAN WHICH WOULD CAUSE UNSAFE OPERATION.



TOP VIEW



Installed Options

Label	Component Identification	
	Description	Location
MT-01	Fan Motor	[3]
SC-01	RTC-FSC-1	[1]
SW-01	Main disconnect switch	[3]
TR-01	24VAC 20VA Transformer	[2]

**MOTOR INFO**  
EXHAUST 0.5HP-115V-1P-6.3FLA

**ELECTRICAL INFORMATION**  
MOTOR/CTRL MCA: 7.9A  
MOTOR/CTRL MOP: 15A

**NOTES**  
----- DENOTES FIELD WIRING  
————— DENOTES INTERNAL WIRING

**WIRE COLOR**  
BK - BLACK      YW - YELLOW  
BL - BLUE      GR - GREEN  
BR - BROWN    GY - GRAY  
OR - ORANGE    PR - PURPLE  
RD - RED        PK - PINK  
WH - WHITE