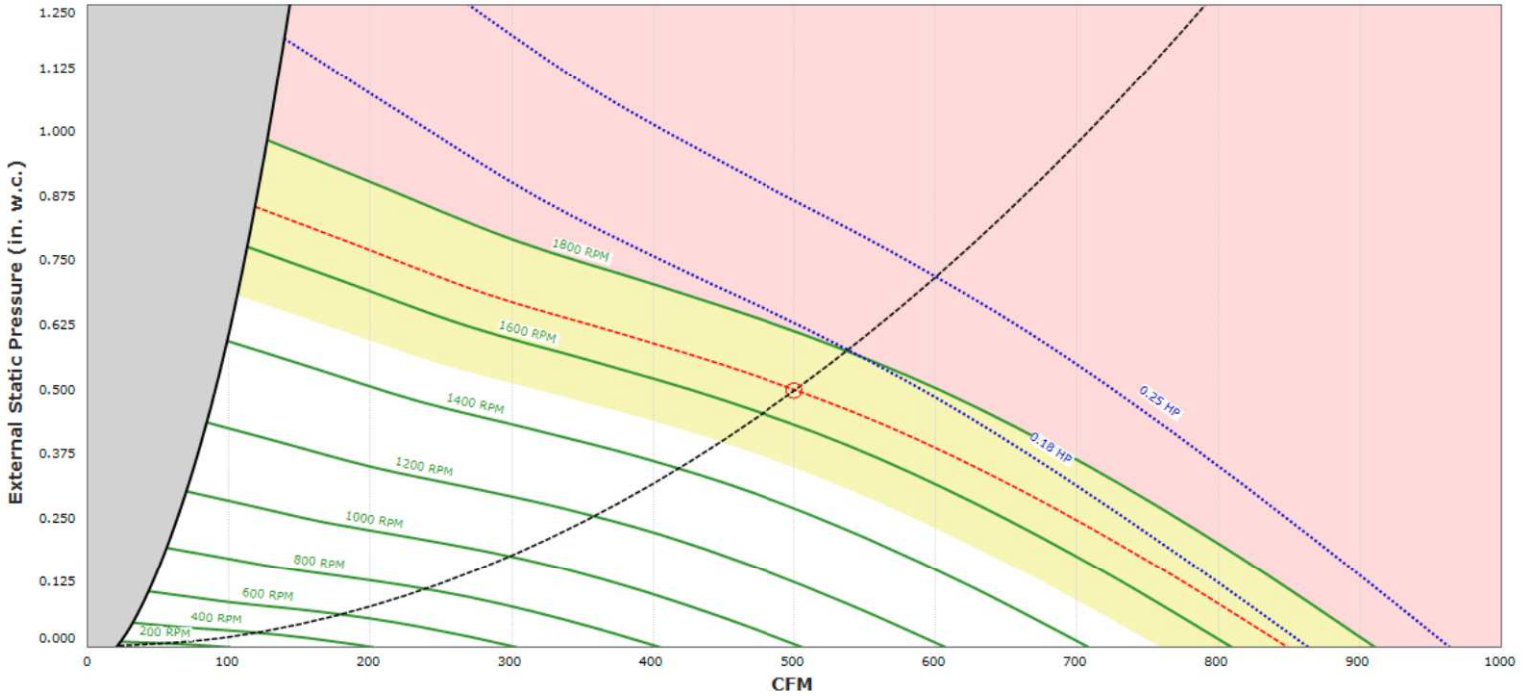




DU12HK (#1) DU12hP-600CFM Weight: 87 lbs.



High Speed Direct Drive Centrifugal Upblast Exhaust Fan with speed control (speed control included for single phase only), disconnect switch and 10-1/2" wheel.



### EXHAUST MOTOR

Model BMN42-180I1-ES-IBA-CA-60-115 • 0.250 HP • 1 Phs • 115 V • 60Hz • 2.9 FLA • TEAO-ECM (Totally Enclosed Air Over Electronically Commutated Motor)

### EXHAUST PERFORMANCE

|                  |             |               |        |                     |             |
|------------------|-------------|---------------|--------|---------------------|-------------|
| Volume:          | 500 CFM     | RPM:          | 1678   | TS:                 | 4613 ft/min |
| Static Pressure: | 0.500" w.g. | BHP:          | 0.145  | Discharge Velocity: | 355 FPM     |
| Altitude:        | 0'          | Ambient Temp: | 70.0°F | FEI:                | 1.339       |

### CONSTRUCTION FEATURES

- Housing constructed of heavy gauge aluminum
- Centrifugal backward inclined, non-overloading wheel
- Weatherproof safety disconnect switch
- Grease spout welded to housing
- Vibration isolators
- Continuous duty, thermal protected, permanently lubricated, direct drive motor
- Forces fresh air through motor to ensure long motor life
- Variable Speed Control on Single Phase Units Only. (VFDs required to adjust speed for 3 phase versions)
- Corrosion resistant fasteners
- Thermal overload protection
- High heat operation (400 °F)
- Rated for restaurant and general ventilation applications
- Grease classification tested

### EXHAUST INSTALLATION INFORMATION

|                 |   |
|-----------------|---|
| Unit Voltage:   | 1 phs 115 V 60Hz                                      |
| Unit Main Input | 3.7 Amps MCA • 15 Amps MOP • 115 V • 14 AWG Wire Min. |
| SCCR:           | 10 kAmp   |

### CONFIGURED OPTIONS

- Full crating for exhaust fans for shipping.
- ECM Wiring Package and Manual or 0-10VDC Control for Exhaust EC motors. RTC Controller (No harness when ordered as a part).

## DU12HK SOUND (1678 RPM) AT 5 FT. IN OCTAVES:

| 1    | 2    | 3      | 4    | 5    | 6    | 7    | 8    |
|------|------|--------|------|------|------|------|------|
| 73.5 | 75.9 | 78.8   | 68.3 | 65.4 | 60.9 | 59.2 | 51.4 |
| LWA: | 73.2 | Sones: | 10.4 | DBA: | 61.7 |      |      |

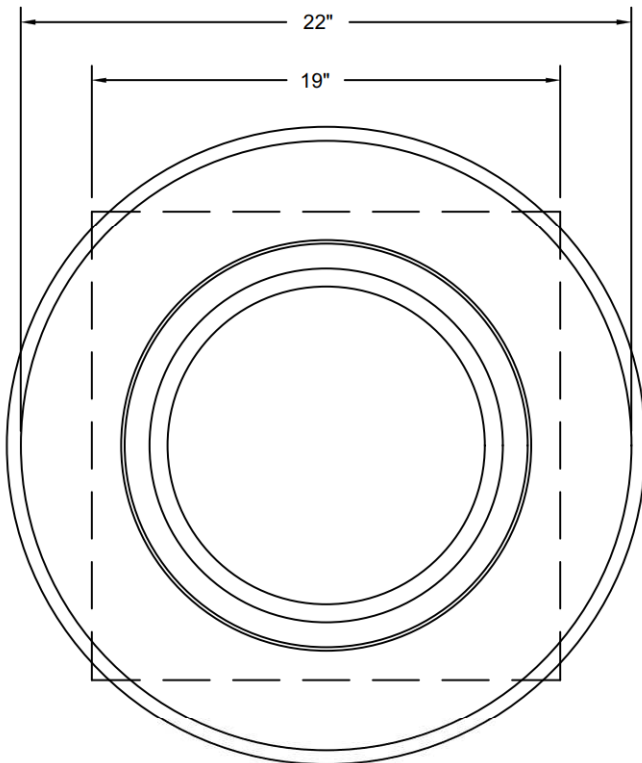
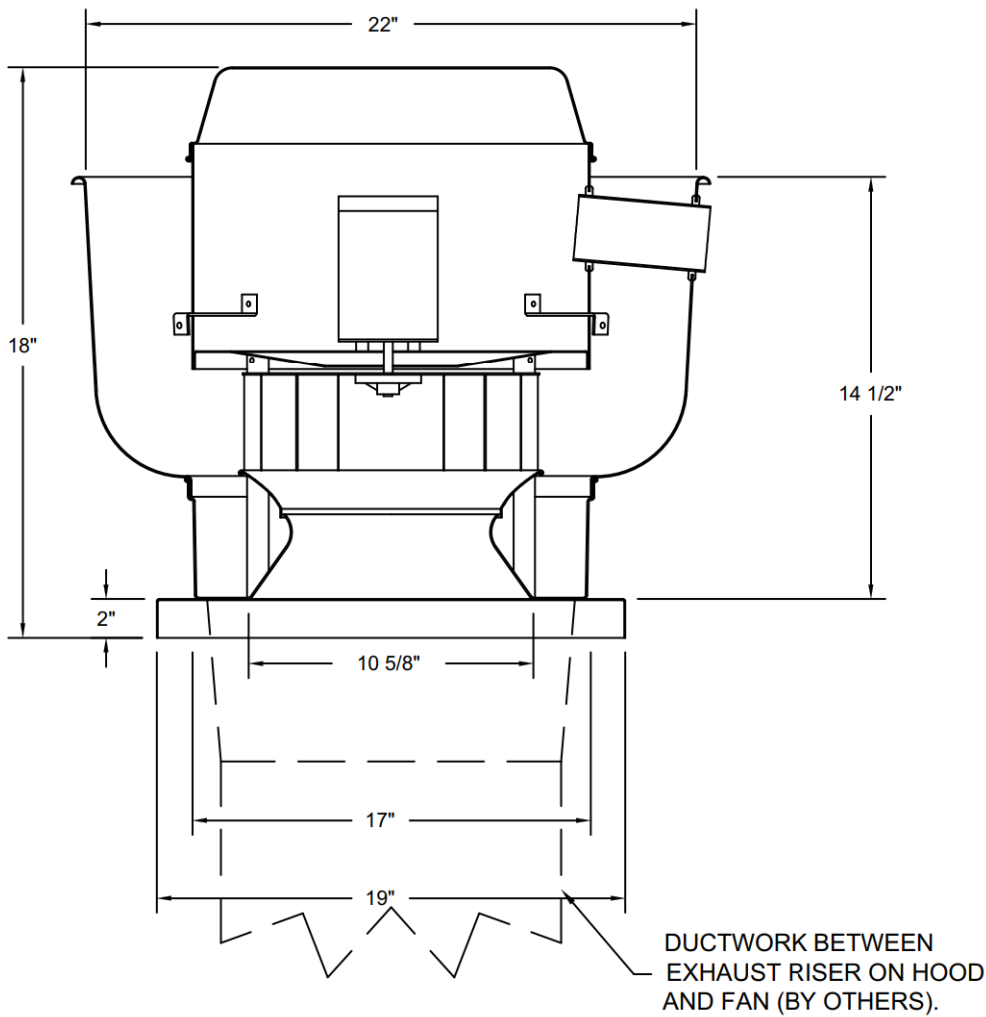
Note: Sound data across operational range. Tested in accordance to AHRI Standard 270/370.

## FEATURES:

- DIRECT DRIVE CONSTRUCTION (NO BELTS/PULLEYS).
- ROOF MOUNTED FANS.
- RESTAURANT MODEL.
- UL705
- VARIABLE SPEED CONTROL.
- INTERNAL WIRING.
- THERMAL OVERLOAD PROTECTION (SINGLE PHASE).
- HIGH HEAT OPERATION 300°F (149°C).
  
- NEMA 3R SAFETY DISCONNECT SWITCH.

### NORMAL TEMPERATURE TEST

EXHAUST FAN MUST OPERATE CONTINUOUSLY WHILE EXHAUSTING AIR AT 300°F (149°C) UNTIL ALL FAN PARTS HAVE REACHED THERMAL EQUILIBRIUM, AND WITHOUT ANY DETERIORATING EFFECTS TO THE FAN WHICH WOULD CAUSE UNSAFE OPERATION.



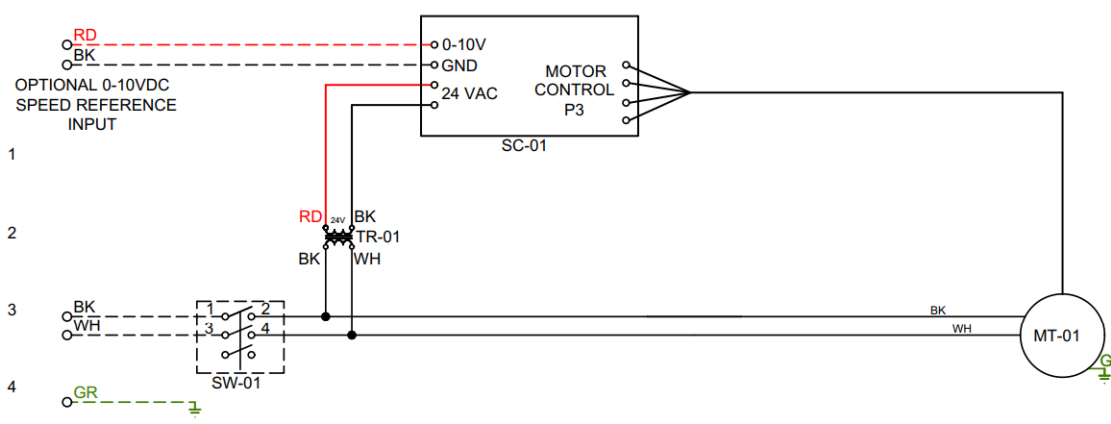
TOP VIEW

Exhaust Fan Wiring

PROJECT Sheldon MASTER DIRECT DRIVE Stock ASD F...

DRAWING NUMBER EXH8445497-1

MODEL DU12HK



Installed Options

| Label | Component Identification |          |
|-------|--------------------------|----------|
|       | Description              | Location |
| MT-01 | Fan Motor                | [3]      |
| SC-01 | RTC-FSC-1                | [1]      |
| SW-01 | Main disconnect switch   | [3]      |
| TR-01 | 24VAC 20VA Transformer   | [2]      |

**MOTOR INFO**  
EXHAUST 0.2HP-115V-1P-2.9FLA

**ELECTRICAL INFORMATION**  
MOTOR/CTRL MCA: 3.7A  
MOTOR/CTRL MOP: 15A

**NOTES**  
 - - - - - DENOTES FIELD WIRING  
 \_\_\_\_\_ DENOTES INTERNAL WIRING

**WIRE COLOR**

|             |             |
|-------------|-------------|
| BK - BLACK  | YW - YELLOW |
| BL - BLUE   | GR - GREEN  |
| BR - BROWN  | GY - GRAY   |
| OR - ORANGE | PR - PURPLE |
| RD - RED    | PK - PINK   |
| WH - WHITE  |             |