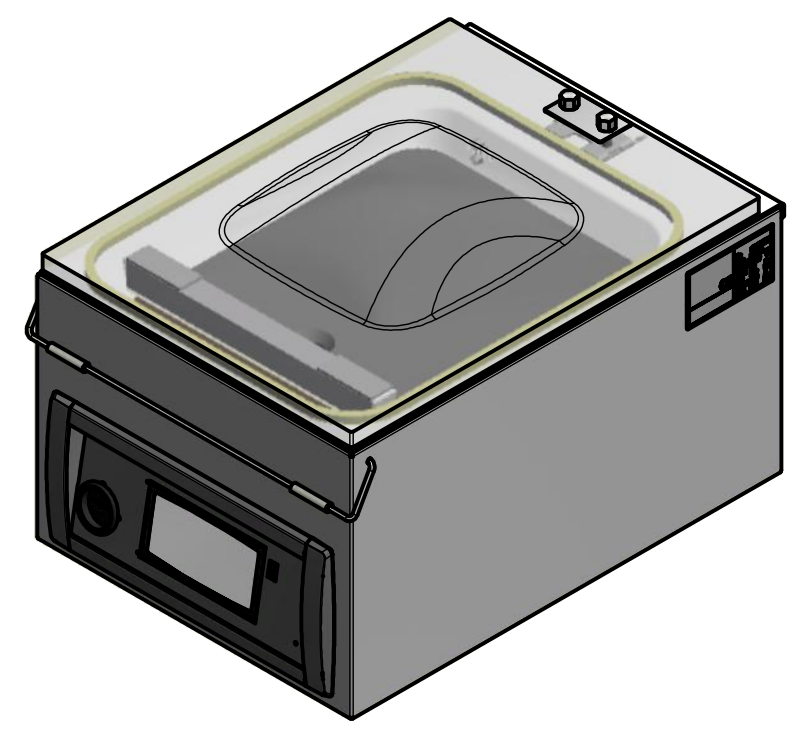
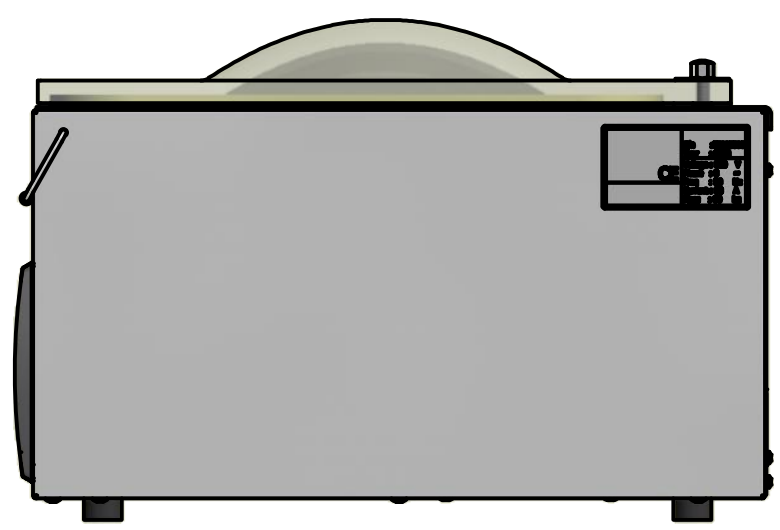
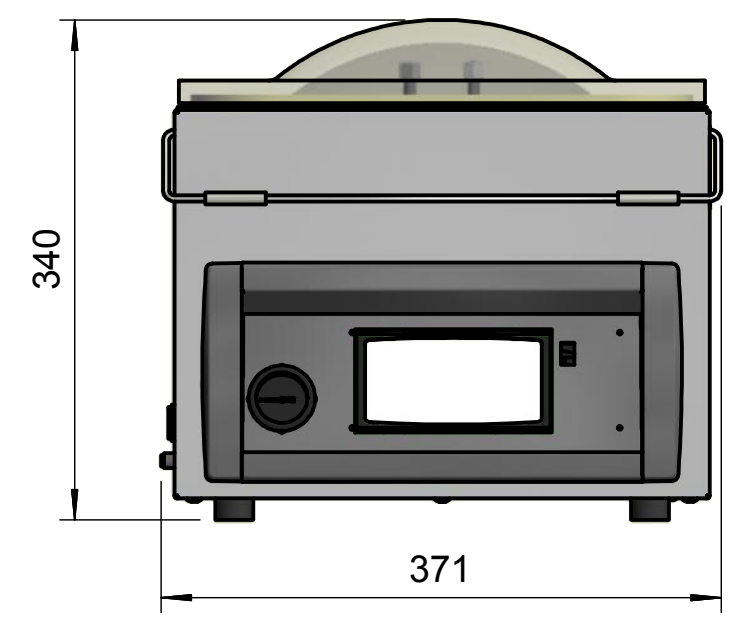
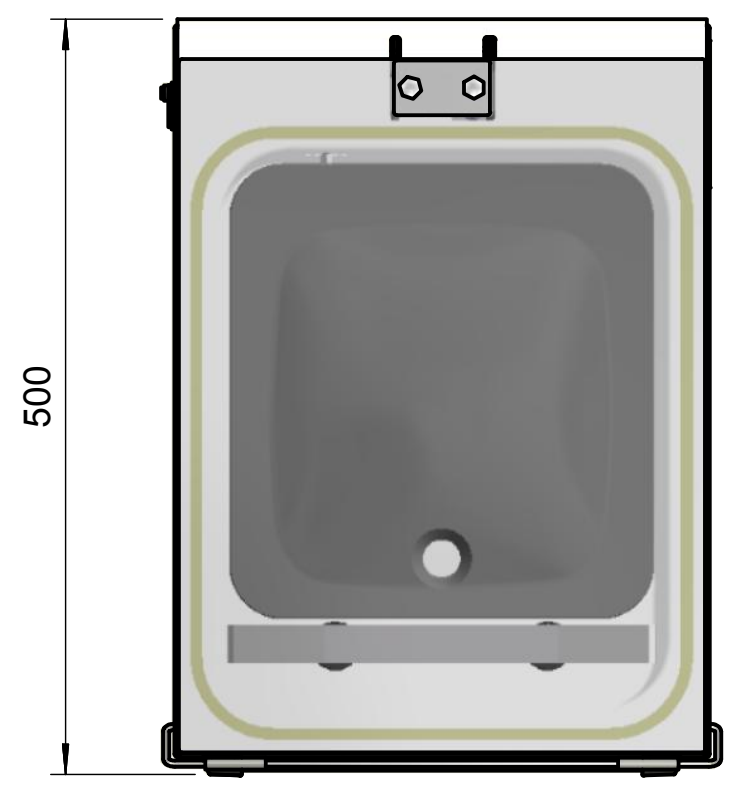

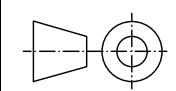


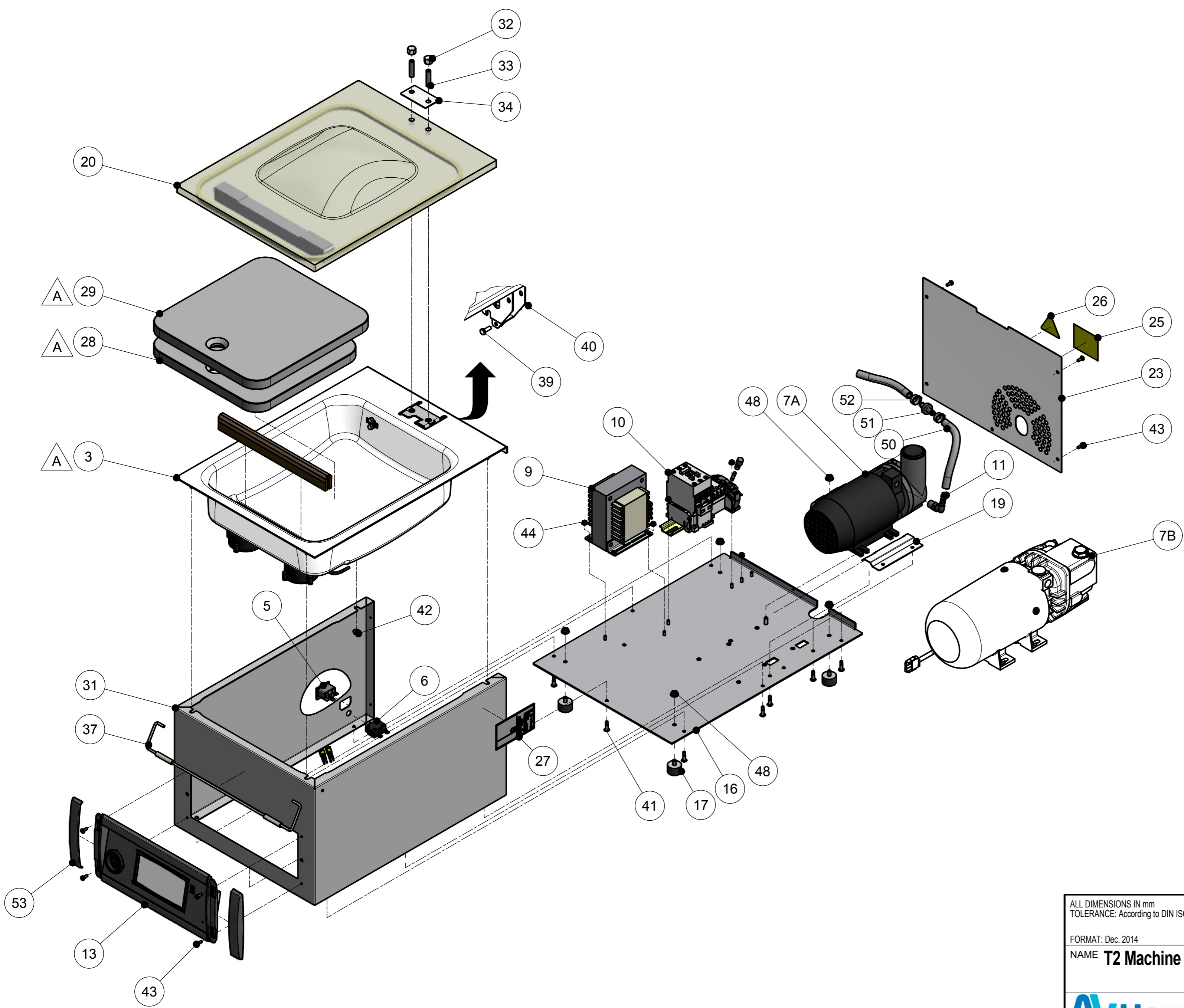
Ownership explicitly reserved to HFE vacuum systems b.v. Multiplication in any form to third parties is not permitted without written permission of the owner.



REV	DATE	DESCRIPTION
A	24-10-2016	New R2 model vacuumchamber and insertplates
REVISION HISTORY		

ALL DIMENSIONS IN mm TOLERANCE: According to DIN ISO 2768 Part 1-m and Part 2-K		DRAWN: Peter	MAT :
FORMAT: Dec. 2014		DATE : 4-9-2012	DIM :
NAME T2 Machine Outline drawing		CHECK :	FINISH:
 PO Box 2261 5202 CG 's-Hertogenbosch Netherlands Phone: +31 (0)73 6 271 271		SCALE 1 : 5	FORM A3
			ART. NR
		REV A	DRW. NR 13110-1
			SHEET NR

Ownership explicitly reserved to HFE vacuum systems b.v. Multiplication in any form to third parties is not permitted without written permission of the owner.



POS	ART. NR	DESCRIPTION	DRW. NR	R
3	A2>T2 LV	VACUUM CHAMBER T2	13111	
4	94.01.0.0355	SEALBEAM COMPACT MINI/MAXI	SB-3-SS	
5	1100.29000	NET ENTRANCE MALE SNAP-IN STF-42		
6	1100.23015	THERMAL FUSE 8A		
7A	03.01.0.0045	VACUUMPUMP 004-316 220/240-1-50/60		
7B	03.01.0.0084	VACUUMPUMP 008 220/240-1-50/60		
9	11.05.0.0450	COMBI-TRANSFORMER P100/230V-S16/24V		
10A	1103.20110	DIN RAIL B 1fase	13091	
10B	1103.20100	DIN RAIL A 1fase	13090	
11	02.04.4.0040	SQUARE HOSE COUPLING 1/4"X8 EXT.		
13	A5>1P- -SMALL	Assembly control panel small	13911	
16	0903.10065	BASEPLATE T2		
17	1602.00015	SILENCER 25x17		
19	0401.00065	CLAMPING PLATE PUMP T1/T2-4m³		
20A		LID T2 FLAT	13112-2	
20B	A4>T2	LID T2 DOME	13112-1	
22	02.04.4.0045	SQUARE HOSE COUPLING 3/8"X8 EXT.		
23	0902.10065	COVER BACK SIDE T2		
25	96.03.2.0460	NOT FOR SERVICE		
26	96.03.2.1090	NOT FOR SERVICE		
27	96.03.2.0398	NOT FOR SERVICE		
28	1201.04010A	FILLER PLATE BOTTOM T2 - R2		
29	1201.04015A	FILLER PLATE TOP T2 - R2		
31	0901.10065	CHASSIS T2		
32	0111.00080	M8 Hexagon Cap Nut DIN 917		
33	0105.08035	M8x35 Hexagon Socket Set Screw DIN 916		
34	0401.00095	LOCKING PLATE HINGE		
37	1701.00030	LID LOCKER T2		
39	01.02.1.4016	ISO 4017 - M6 x 16		
40	01.12.1.0040	M6 Hex Nut DIN 985		
41	0199.00015	HUCK RIVET 6mm		
42	01.13.0.0000	M5 Hex Nut DIN 6923		
43	01.09.1.0030	M4x10 Cross recessed raised cheese head screws DIN 7985		
44	01.13.0.0020	M4 Hex Nut DIN 6923		
48	01.13.0.0010	Hex Flange Nut DIN 6923 - M6		
49	1802.00065	SUCTION HOSE T2		
51	0209.00005	NON-RETURN VALVE 8MM (only with 4m³ vacuum pump)		
52	02.01.2.0030	Hose clamp (only with 4m³ vacuum pump)		
53	1218.00050	Cap Holder 04-control MINI		
POS	ART. NR	DESCRIPTION	DRW. NR	R

ALL DIMENSIONS IN mm
TOLERANCE: According to DIN ISO 2768 Part 1-m and Part 2-K

FORMAT: Dec. 2014

NAME **T2 Machine**

SCALE **1 : 5** FORM **A2**

PO Box 2261
5202 CG 's-Hertogenbosch Netherlands
Phone: +31 (0)73 6 271 271

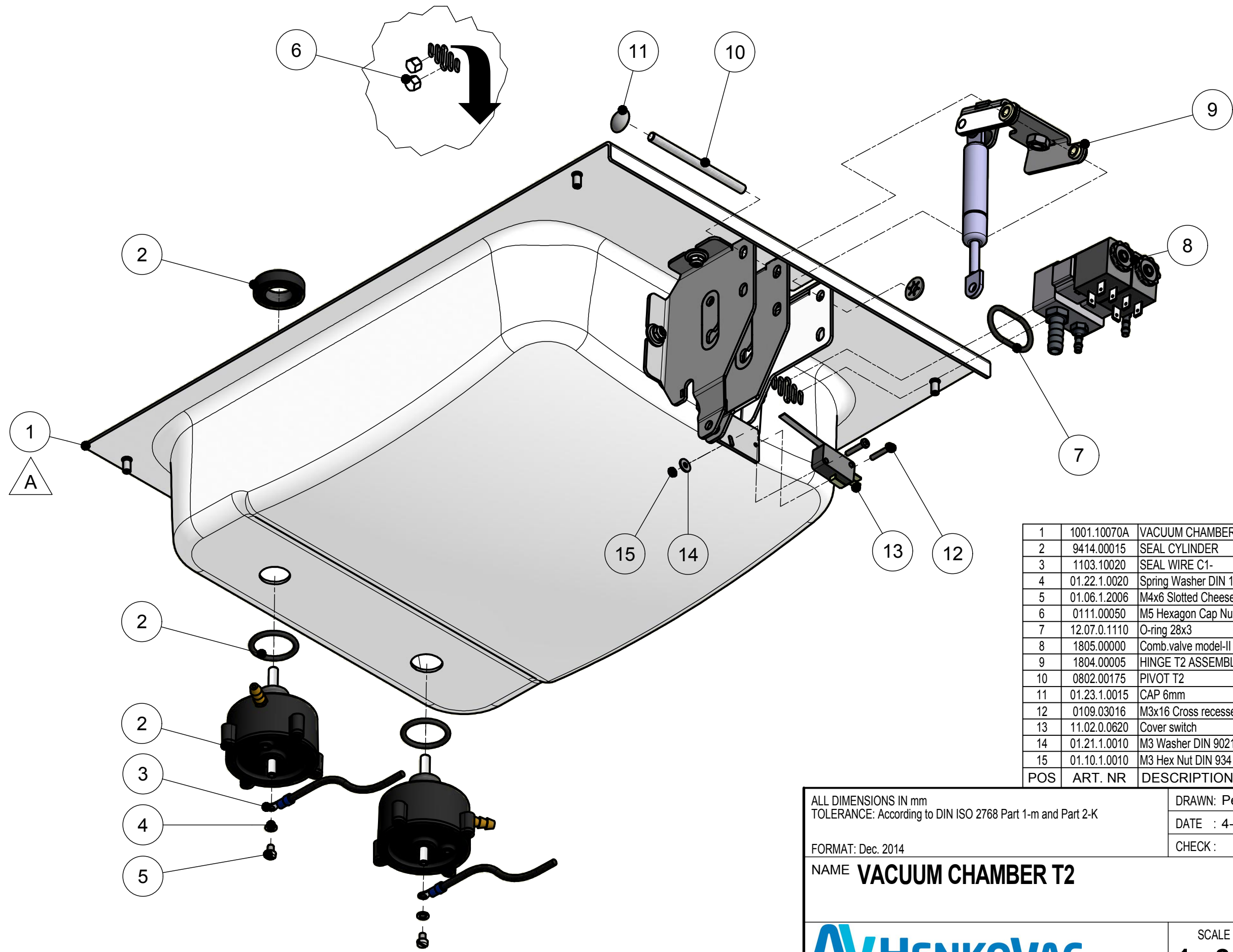
DRAWN: Peter MAT: DATE: 4-9-2012 DIM: CHECK: FINISH: REM: REPLACED BY REPLACES

ART. NR DRW. NR SHEET NR

13110-2

REV	DATE	DESCRIPTION
A	24-10-2016	New R2 model vacuumchamber and insertplates
REVISION HISTORY		

Ownership explicitly reserved to HFE vacuum systems b.v. Multiplication in any form to third parties is not permitted without written permission of the owner.



1	1001.10070A	VACUUM CHAMBER T2-R2		
2	9414.00015	SEAL CYLINDER		
3	1103.10020	SEAL WIRE C1-		
4	01.22.1.0020	Spring Washer DIN 127 - A 4		
5	01.06.1.2006	M4x6 Slotted Cheese Head Screw DIN 84		
6	0111.00050	M5 Hexagon Cap Nut DIN 917		
7	12.07.0.1110	O-ring 28x3		
8	1805.00000	Comb.valve model-II	13070	D
9	1804.00005	HINGE T2 ASSEMBLED	13065	
10	0802.00175	PIVOT T2		
11	01.23.1.0015	CAP 6mm		
12	0109.03016	M3x16 Cross recessed raised cheese head screws - DIN 7985		
13	11.02.0.0620	Cover switch		
14	01.21.1.0010	M3 Washer DIN 9021		
15	01.10.1.0010	M3 Hex Nut DIN 934 -		
POS	ART. NR	DESCRIPTION	DRW. NR	R

REV	DATE	DESCRIPTION
A	24-10-2016	New model vacuumchamber R2

REVISION HISTORY

ALL DIMENSIONS IN mm
TOLERANCE: According to DIN ISO 2768 Part 1-m and Part 2-K

FORMAT: Dec. 2014

NAME **VACUUM CHAMBER T2**

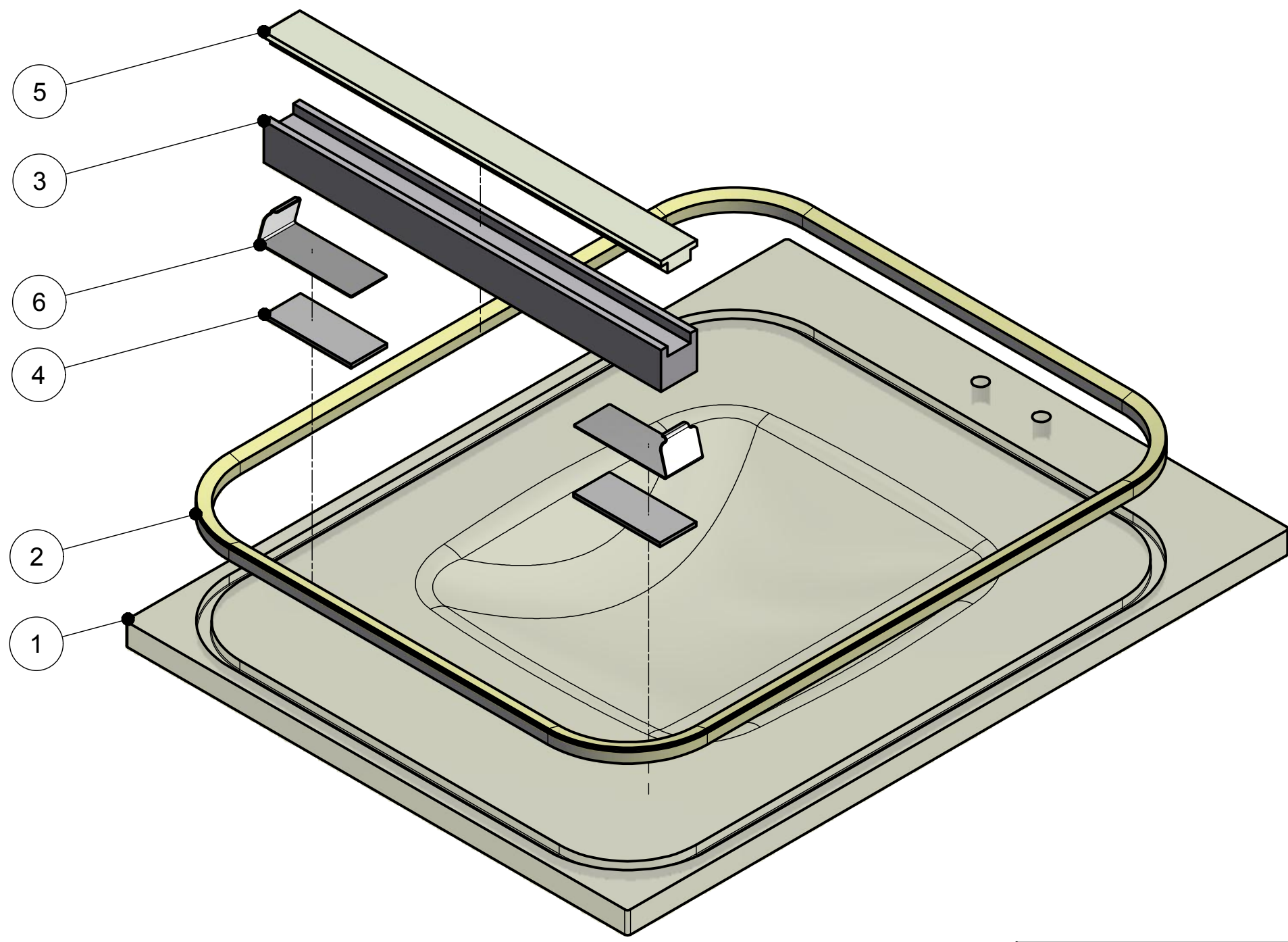
SCALE **1 : 2.5** FORM **A3** ART. NR **A2>T2 LV**

PO Box 2261
5202 CG 's-Hertogenbosch Netherlands
Phone: +31 (0)73 6 271 271

DRAWN: Peter MAT :
DATE : 4-9-2012 DIM :
CHECK : FINISH:
REM :
REPLACED BY REPLACES

REV DRW. NR SHEET NR
13111-1

Ownership explicitly reserved to HFE vacuum systems b.v. Multiplication in any form to third parties is not permitted without written permission of the owner.



1	1003.10025	LID T2
2	12.05.0.5010	SILICON PROFILE 8MM 60° SHORE
3	9410.00135	SILICON BAR T2
4	0501.10000	TAPE
5	12.05.0.5150	SILICON T-PROFILE 40° SHORE
6	0605.00025	Clamping spring silicone holder
POS	ART. NR	DESCRIPTION

ALL DIMENSIONS IN mm
 TOLERANCE: According to DIN ISO 2768 Part 1-m and Part 2-K
 FORMAT: Dec. 2014

DRAWN: Peter
 DATE : 4-10-2012
 CHECK :
 MAT :
 DIM :
 FINISH:

NAME **LID T2**
art.nr: A4>T2

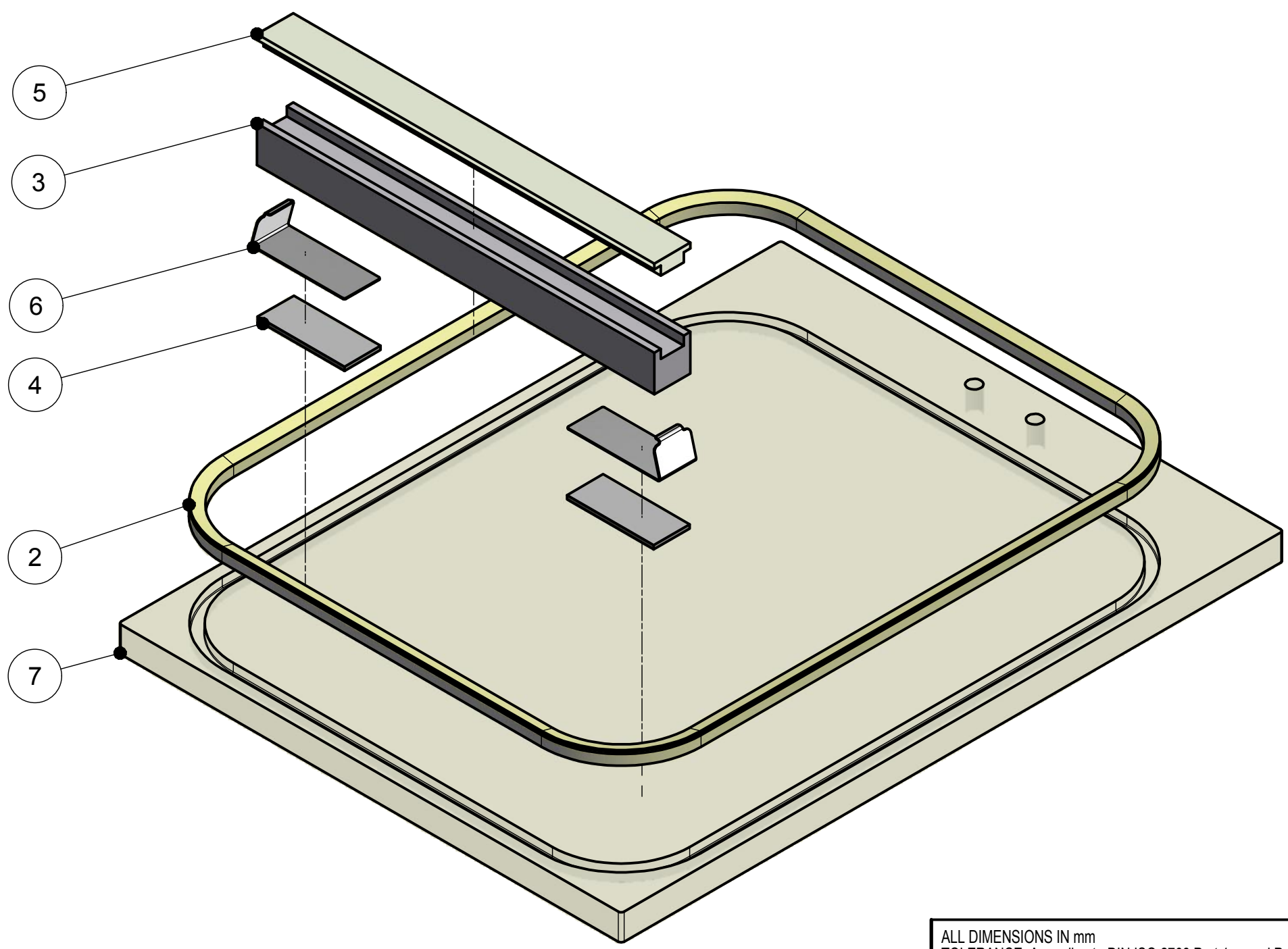
REM :
 REPLACED BY
 REPLACES

HENKOVAC
 PO Box 2261
 5202 CG 's-Hertogenbosch Netherlands
 Phone: +31 (0)73 6 271 271


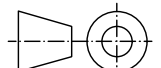
SCALE **1 : 2.5**
 FORM **A3**
 ART. NR
 REV
 DRW. NR **13112-1**
 SHEET NR

REV	DATE	DESCRIPTION
-	-	-
REVISION HISTORY		

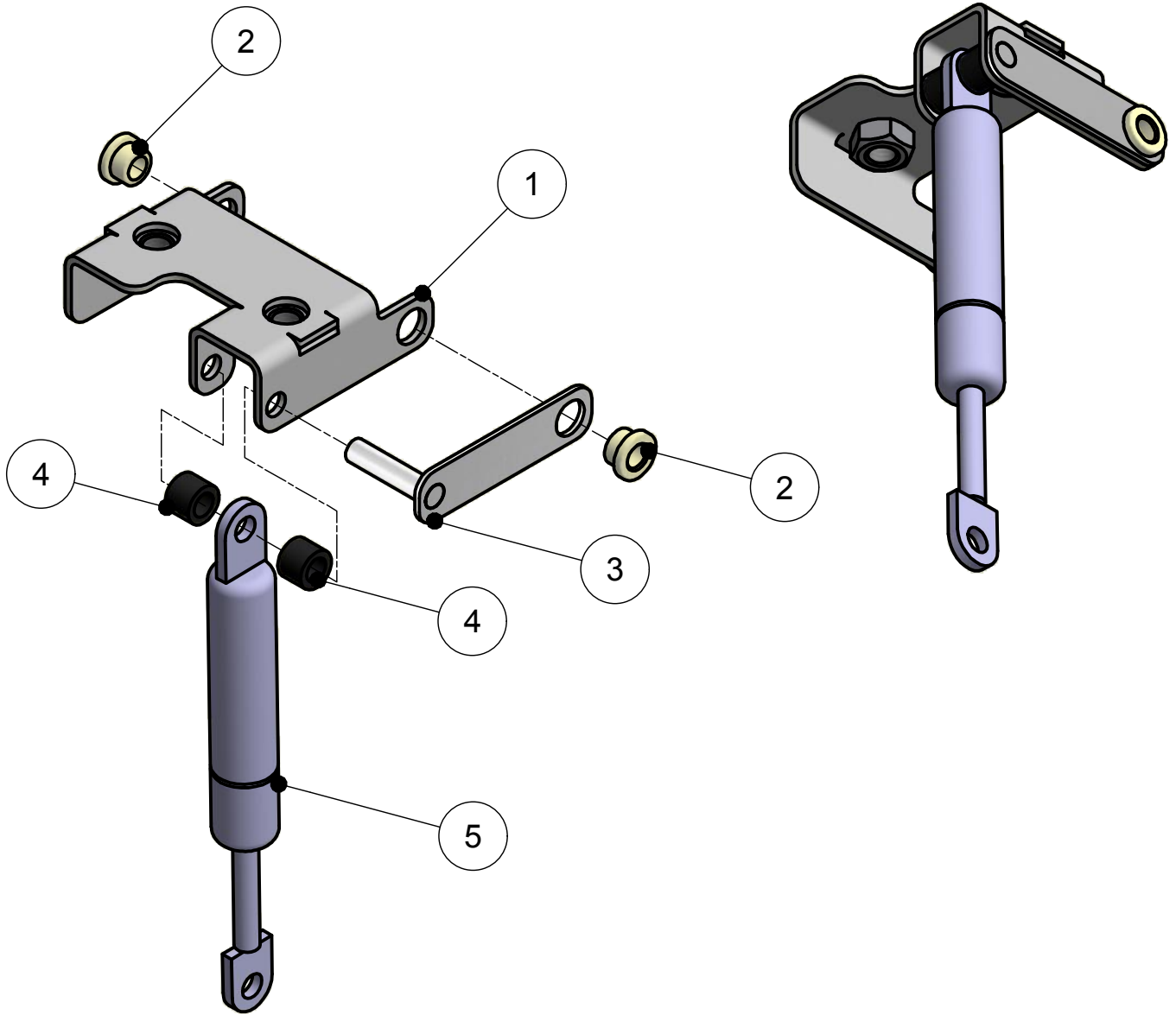
Ownership explicitly reserved to HFE vacuum systems b.v. Multiplication in any form to third parties is not permitted without written permission of the owner.



2	12.05.0.5010	SILICON PROFILE 8MM 60° SHORE
3	9410.00135	SILICON BAR T2
4	0501.10000	TAPE
5	12.05.0.5150	SILICON T-PROFILE 40° SHORE
6	0605.00025	Clamping spring silicone holder
7	1003.10040	LID FLAT T2
POS	ART. NR	DESCRIPTION

ALL DIMENSIONS IN mm TOLERANCE: According to DIN ISO 2768 Part 1-m and Part 2-K		DRAWN: Peter		MAT :	
FORMAT: Dec. 2014		DATE : 4-10-2012		DIM :	
NAME LID T2 art.nr: A4>T2-FLAT		CHECK :		FINISH:	
		REPLACED BY		REPLACES	
 PO Box 2261 5202 CG 's-Hertogenbosch Netherlands Phone: +31 (0)73 6 271 271		SCALE	FORM	ART. NR	
		1 : 2.5	A3		
			REV	DRW. NR	SHEET NR
				13112-2	

Ownership explicitly reserved to HFE vacuum systems b.v. Multiplication in any form to third parties is not permitted without written permission of the owner.



1	0401.00050	HINGE T2	1
2	1500.00005	SLIDE BEARING	2
3	0400.00360	LOCKING PLATE HINGE PART	1
4	0199.00025	SPACER 6.2X10X7.5	2
5	0601.00000	GAS SPRING 0814MF / 350N	1
7	01.10.1.0050	M8 Hex Nut DIN 934	2
POS	ART. NR	DESCRIPTION	QTY

ALL DIMENSIONS IN mm
TOLERANCE: According to DIN ISO 2768 Part 1-m and Part 2-K

FORMAT: Dec. 2014

NAME **HINGE T2 ASSEMBLED**

HENKOVAC

PO Box 2261
5202 CG 's-Hertogenbosch Netherlands
Phone: +31 (0)73 6 271 271

DRAWN: Peter

MAT :

DATE : 28-6-2007

DIM :

CHECK :

FINISH:

REM :

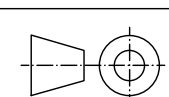
REPLACED BY

REPLACES

SCALE
1 : 1.5

FORM
A4

ART. NR
1804.00005

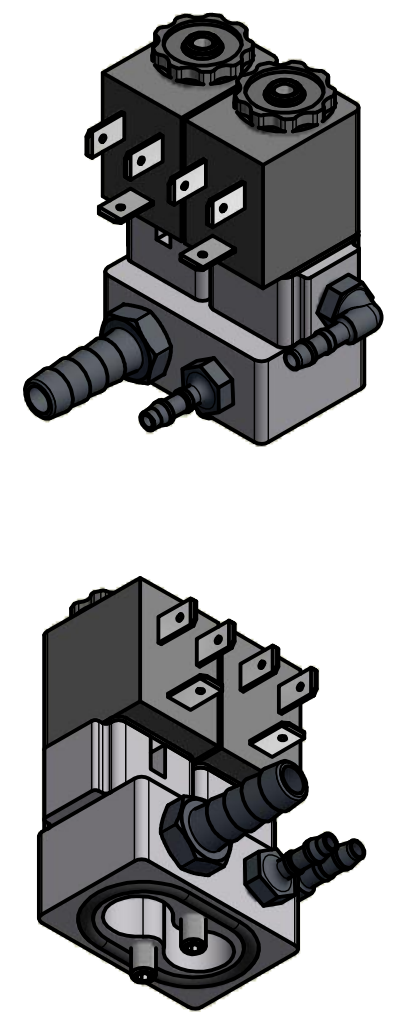
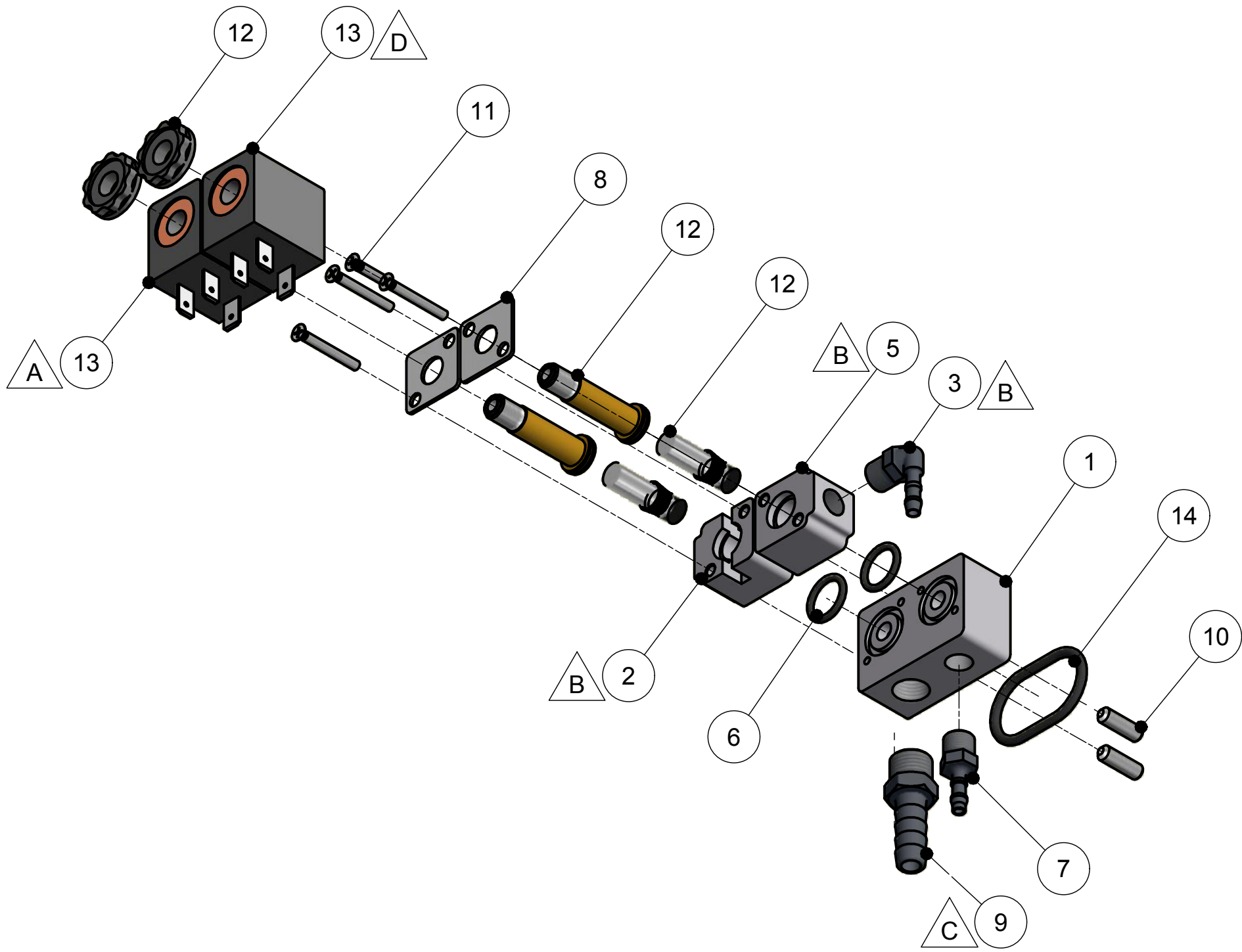


REV

DRW. NR
13065-2

SHEET NR

Ownership explicitly reserved to HFE vacuum systems b.v. Multiplication in any form to third parties is not permitted without written permission of the owner.

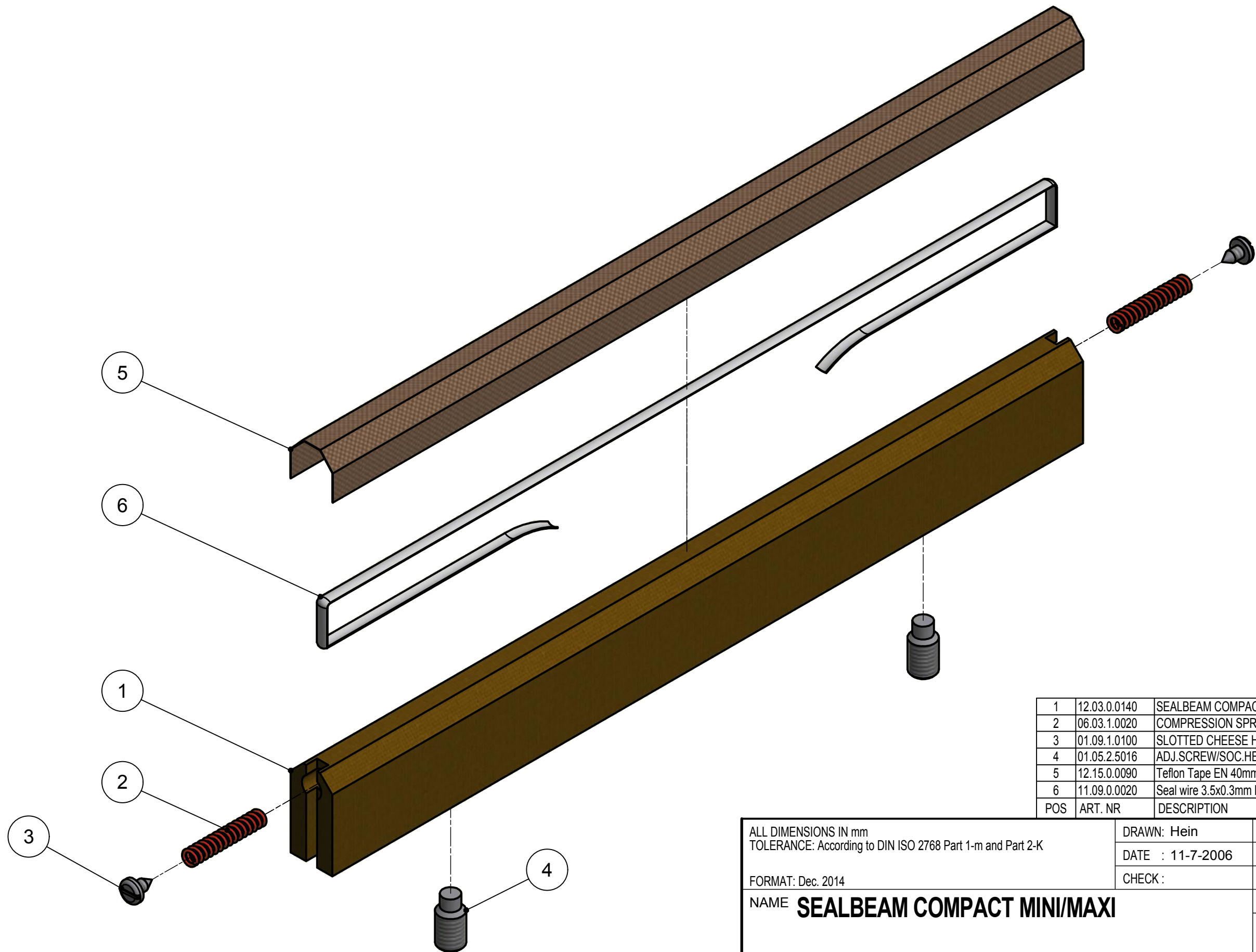


1	0804.00170	BASE BLOCK COMBINATION VALVE MODEL II	1
2	0804.00180	ADAPTER VALVE 6mm	1
3	02.04.4.0010	SQUARE HOSE COUPLING 1/8"x4 EXT.	1
5	0804.00175	ADAPTER VALVE 2,5mm	1
6	0503.10015	O-RING 12X2 MM	2
7	0206.00060	RIGHT HOSE COUPLING 1/8"x4 EXT.	1
8	0401.00070	CLAMPING PLATE VALVE ARMATURE	2
9	02.04.3.0060	BRASS HOSE COUPLING 1/4"x8 EXT.	1
10	01.05.1.3016	M5x16 Hexagon Socket Set Screw DIN 916	2
11		Countersunk Flat Head Screw M3x25	4
12	1304.00030	3/2 ARMATURE WITH 8MM SEAL	2
13	1100.40010	COIL 24VAC 50/60Hz 8,5VA	2
14	12.07.0.1110	O-RING 28x3	1
POS	ART. NR	DESCRIPTION	QTY

REV	DATE	DESCRIPTION
A	27-3-2014	Devac valve 8,5VA coil
B	24-6-2016	Pos 2 & 5 switched and Pos 3 angle instead of straight hose connector
C	19-1-2017	Pos 9 straight instead of angle hose connector 1/4"x8mm
D	12-10-2017	Seal valve 8,5VA coil instead of 5,5VA
REVISION HISTORY		


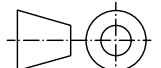
ALL DIMENSIONS IN mm TOLERANCE: According to DIN ISO 2768 Part 1-m and Part 2-K		DRAWN: Peter	MAT :
FORMAT: Dec. 2014		DATE : 6-9-2012	DIM :
NAME Comb.valve model-II		CHECK :	FINISH:
		REM :	
		REPLACED BY	REPLACES
		SCALE 1 : 1.5	FORM A3
		ART. NR 1805.00000	
PO Box 2261 5202 CG 's-Hertogenbosch Netherlands Phone: +31 (0)73 6 271 271			REV D
		DRW. NR 13070 -1	SHEET NR

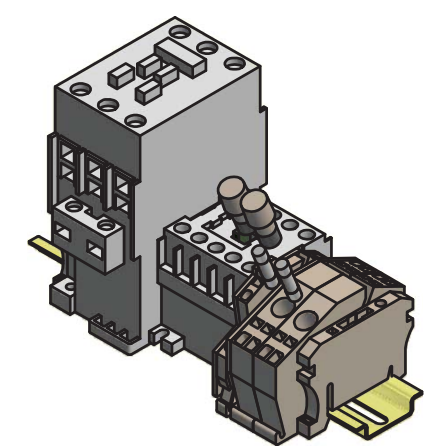
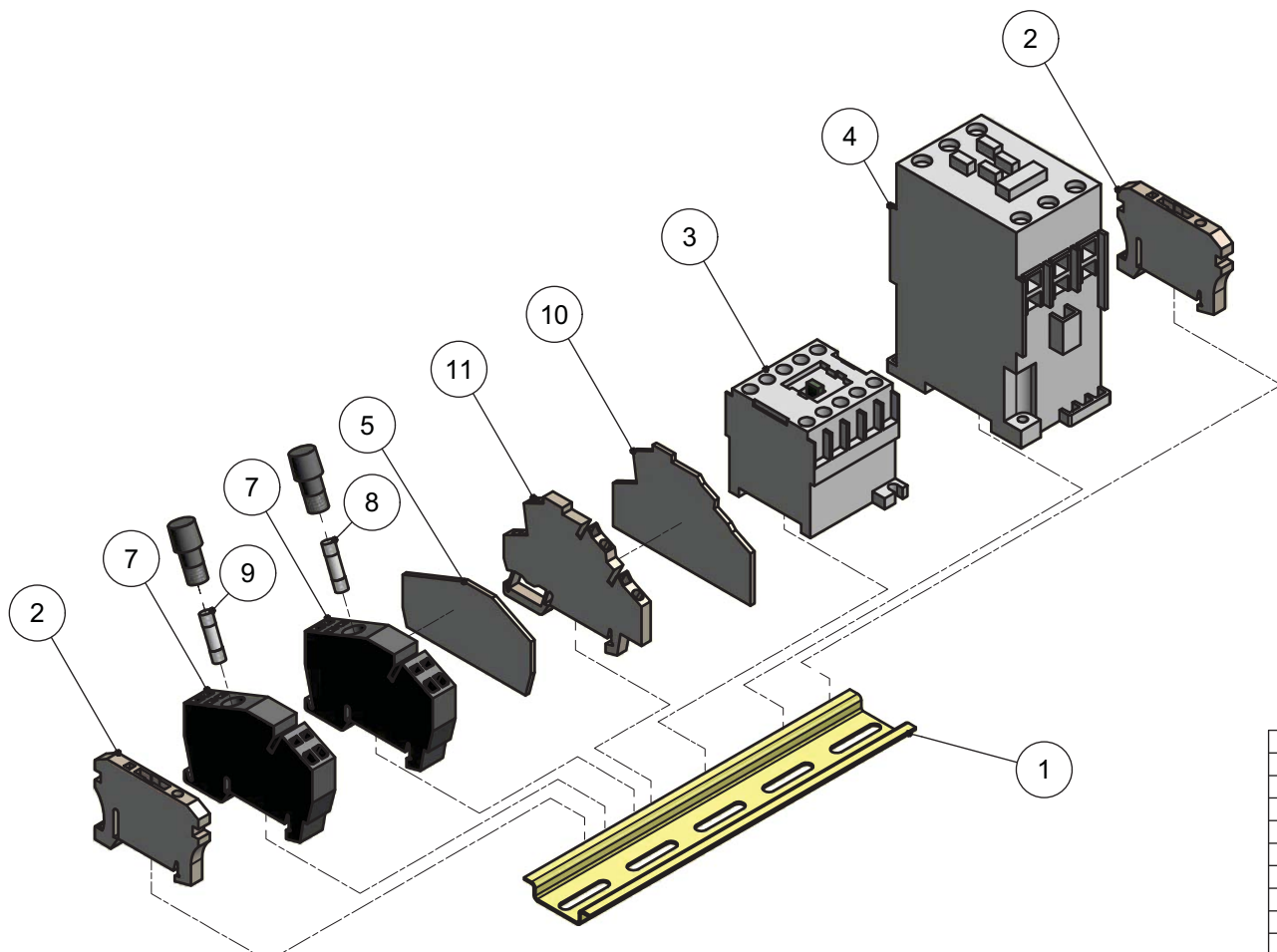
Ownership explicitly reserved to HFE vacuum systems b.v. Multiplication in any form to third parties is not permitted without written permission of the owner.



POS	ART. NR	DESCRIPTION	QTY
1	12.03.0.0140	SEALBEAM COMPACT MINI/MAXI	1
2	06.03.1.0020	COMPRESSION SPRING SEAL BEAM	2
3	01.09.1.0100	SLOTTED CHEESE HEAD SCREW	2
4	01.05.2.5016	ADJ.SCREW/SOC.HEAD M8X16 D915	2
5	12.15.0.0090	Teflon Tape EN 40mm	1
6	11.09.0.0020	Seal wire 3.5x0.3mm L=1mtr	1


REV	DATE	DESCRIPTION
-	-	-
REVISION HISTORY		

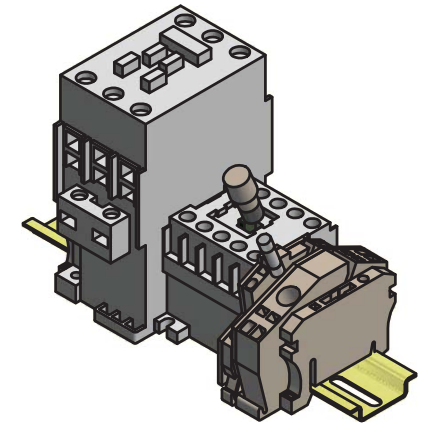
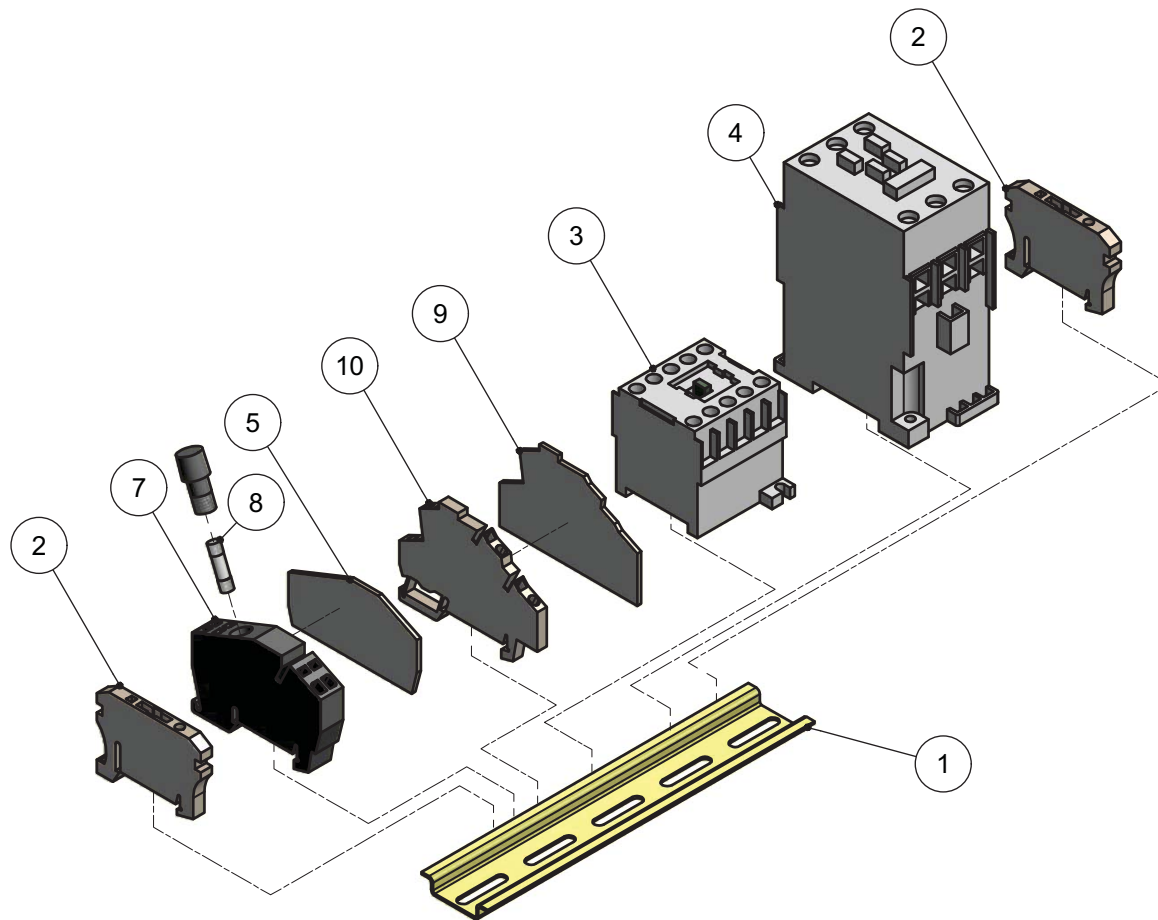
ALL DIMENSIONS IN mm TOLERANCE: According to DIN ISO 2768 Part 1-m and Part 2-K		DRAWN: Hein	MAT :
FORMAT: Dec. 2014		DATE : 11-7-2006	DIM :
NAME SEALBEAM COMPACT MINI/MAXI		CHECK :	FINISH:
		REPLACED BY	REPLACES
 PO Box 2261 5202 CG 's-Hertogenbosch Netherlands Phone: +31 (0)73 6 271 271		SCALE 1 : 1	FORM A3
		ART. NR 94.01.0.0355	DRW. NR SB-3-SS-1
			REV
		SHEET NR	



POS	ART. NR	DESCRIPTION	QTY	DRW. NR
1	11.06.9.9180	DIN-RAIL 173mm	1	66010
2	11.06.2.0200	END FENT	2	
3	1100.22005	MAS AB100-K09KJ400 MS4P 24V 50/60HZ	1	
4	11.02.0.0580	CLOSED CONTACTOR AB100-C30KJ00 24VAC	1	
5	11.06.2.0620	ENDPLATE WIRECONNECTOR 6-2	1	
7	11.06.2.0125	FUSE CLAMP 2,5-2/ZSI	2	
8	11.99.0.0340	FUSE 5x20mm 4Amp. SLOW	1	
9	11.99.0.0440	FUSE 5x20mm 2,5Amp. SLOW	1	
10	11.06.2.0630	ENDPLATE WIRECONNECTOR	1	
11	11.06.2.0425	DOUBLE CLAMP 2,5-2	1	

REV	DATE	DESCRIPTION
A	1-2-2015	Position 6 has been canceled
REVISION HISTORY		

ALL DIMENSIONS IN mm TOLERANCE: According to DIN ISO 2768 Part 1-m and Part 2-K		DRAWN: Peter		MAT :	
FORMAT: Dec. 2014		DATE : 15-5-2013		DIM :	
NAME DIN RAIL A 1fase		CHECK :		FINISH:	
4m³-100/120V		REPLACED BY		REPLACES	
		SCALE 1 : 2		FORM A3	
		REV A		ART. NR 1103.20100	
				DRW. NR 13090-1 SHEET NR	



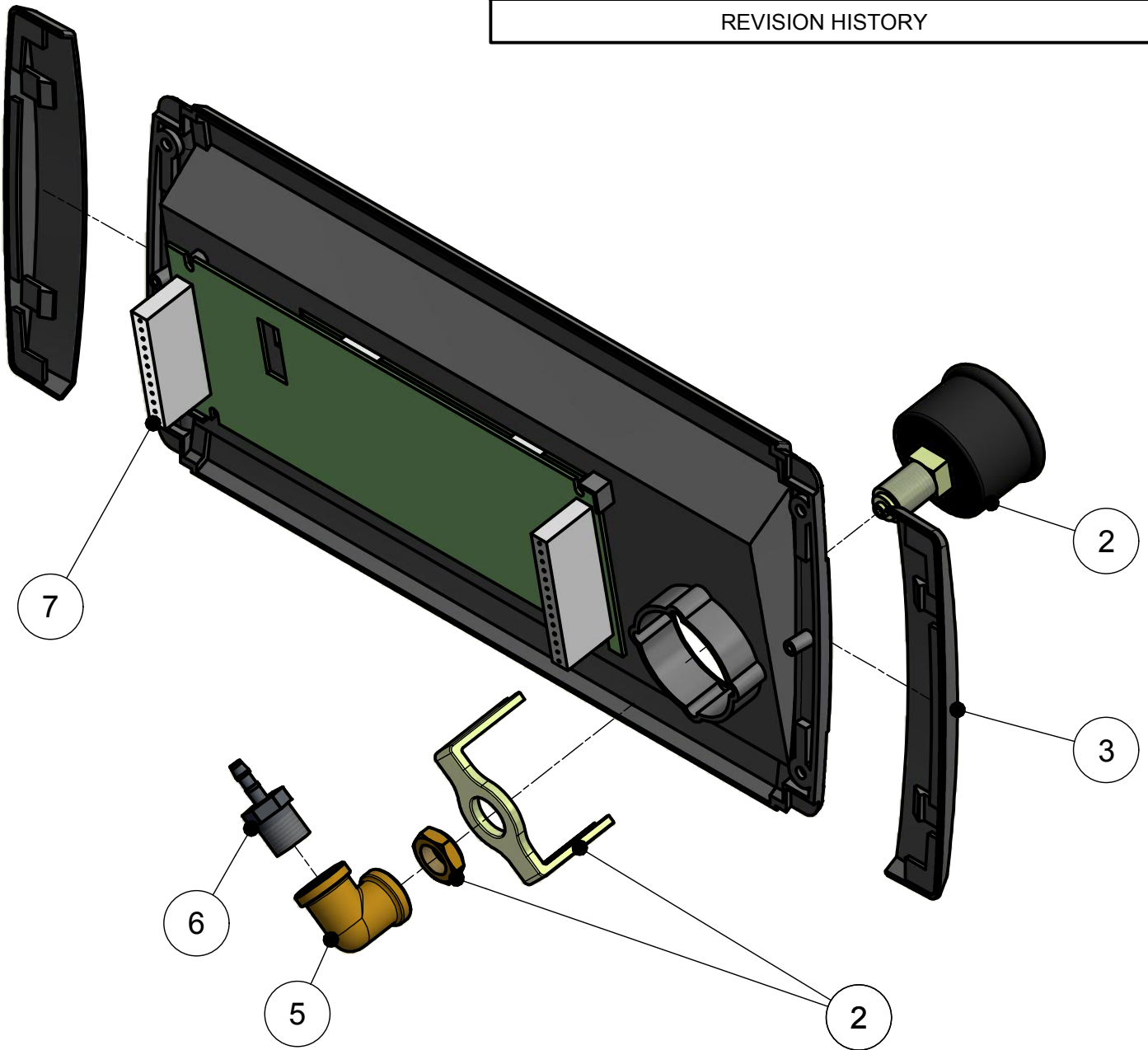
POS	ART. NR	DESCRIPTION	QTY	DRW. NR
1	11.06.9.9180	DIN-RAIL 173mm	1	66010
2	11.06.2.0200	END FENT	2	
3	1100.22005	CLOSED CONTACTOR AB100-K09KJ400 MS4P 24V	1	
4	11.02.0.0580	CLOSED CONTACTOR AB100-C30KJ00 24VAC	1	
5	11.06.2.0620	ENDPLATE WIRECONNECTOR 6-2	1	
7	11.06.2.0125	FUSE CLAMP 2,5-2/ZSI	1	
8	11.99.0.0440	FUSE 5x20 4A	1	
9	11.06.2.0630	ENDPLATE WIRECONNECTOR	1	
10	11.06.2.0425	DOUBLE CLAMP 2,5-2	1	

ALL DIMENSIONS IN mm TOLERANCE: According to DIN ISO 2768 Part 1-m and Part 2-K		DRAWN: Peter		MAT :	
FORMAT: Dec. 2014		DATE : 15-5-2013		DIM :	
		CHECK :		FINISH:	
NAME DIN RAIL B 1fase (4m³-220/240V) en (8m³-100/240V)				REM :	
				REPLACED BY	REPLACES
		SCALE	FORM	ART. NR	
		1 : 2	A3	1103.20110	
		REV	REV	DRW. NR	SHEET NR
				13091 -1	

REV	DATE	DESCRIPTION
A	1-2-2015	Position 6 has been canceled
REVISION HISTORY		

Ownership explicitly reserved to HFE vacuum systems b.v. Multiplication in any form to third parties is not permitted without written permission of the owner.

REV	DATE	DESCRIPTION
-	-	-
REVISION HISTORY		



1	1107.0401-	Control panel small-PCB 1-program
2	03.09.1.0050A	VACUUM GAUGE 40 MM
5	02.03.3.0040	ELBOW 1/4" INT BRASS
6	02.04.4.0065	HOSE CONNECTOR G1/4"X4
POS	ART. NR	DESCRIPTION

ALL DIMENSIONS IN mm
TOLERANCE: According to DIN ISO 2768 Part 1-m and Part 2-K

FORMAT: Dec. 2014

NAME **Assembly control panel small**

HENKOVAC

PO Box 2261
5202 CG 's-Hertogenbosch Netherlands
Phone: +31 (0)73 6 271 271

DRAWN: Hein	MAT :
DATE : 18-10-2012	DIM :
CHECK :	FINISH:
REM :	
REPLACED BY	REPLACES

SCALE 1 : 2	FORM A4	ART. NR
	REV	DRW. NR 13911-1
		SHEET NR

Ownership explicitly reserved to HFE vacuum systems b.v. Multiplication in any form to third parties is not permitted without written permission of the owner.

PRIMAIR VOLTAGE, FUSES

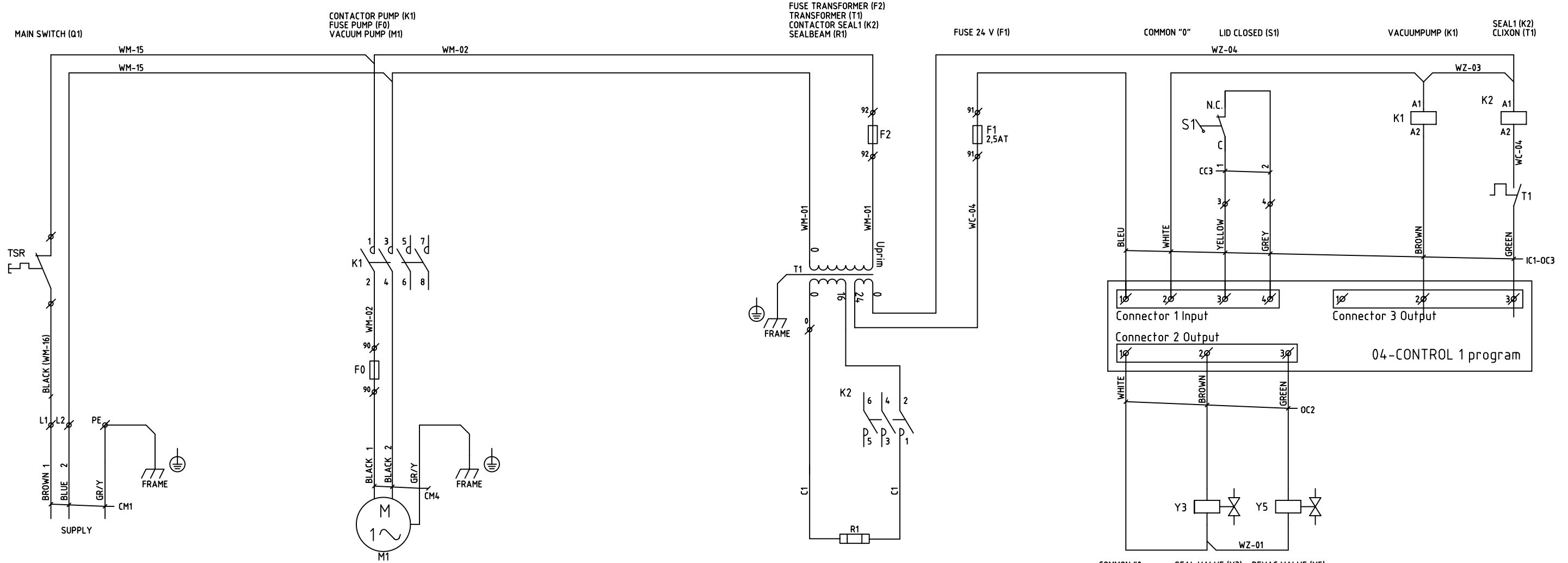
Vacuum pump Capacity m³/h	PRIM. VOLTAGE 50/60 Hz (Uprim) [V]	FUSES [A] (SLOW ACTING)			
		TSR	F0	F1	F2
4 m³/h	100/120 V	8 A	4 A	2,5 A	-
	200-240 V	4 A	-	2,5 A	-
8 m³/h	100/120 V	8 A	-	2,5 A	-
	200-240 V	4 A	-	2,5 A	-
16 m³/h	100/120 V	10 A	-	2,5 A	8 A
	200-240 V	6 A	-	2,5 A	4 A
21 m³/h	100/120 V	-	13 A	2,5 A	8 A
	200-240 V	8 A	-	2,5 A	4 A

SEC. VOLTAGE SEALTRANSFORMERS

MAX. TOTAL SEALENGTH [mm]	SEC. VOLTAGE [V]
410 - 620	16
500 - 825	24
750 - 1030	32
1000 - 1250	48 (24+24)

CABLE AND WIRE NAMES

CODE	NAME
CM	MAIN CIRCUIT CABLE
CC	CONTROL CIRCUIT CABLE
C	MISCELLANEOUS CABLE
IC	INPUT CABLE CONTROLLER
OC	OUTPUT CABLE CONTROLLER
WE	EARTH WIRE
WM	MAIN CIRCUIT WIRE
WC	CONTROL CIRCUIT WIRE
WZ	COMMON "0" WIRE

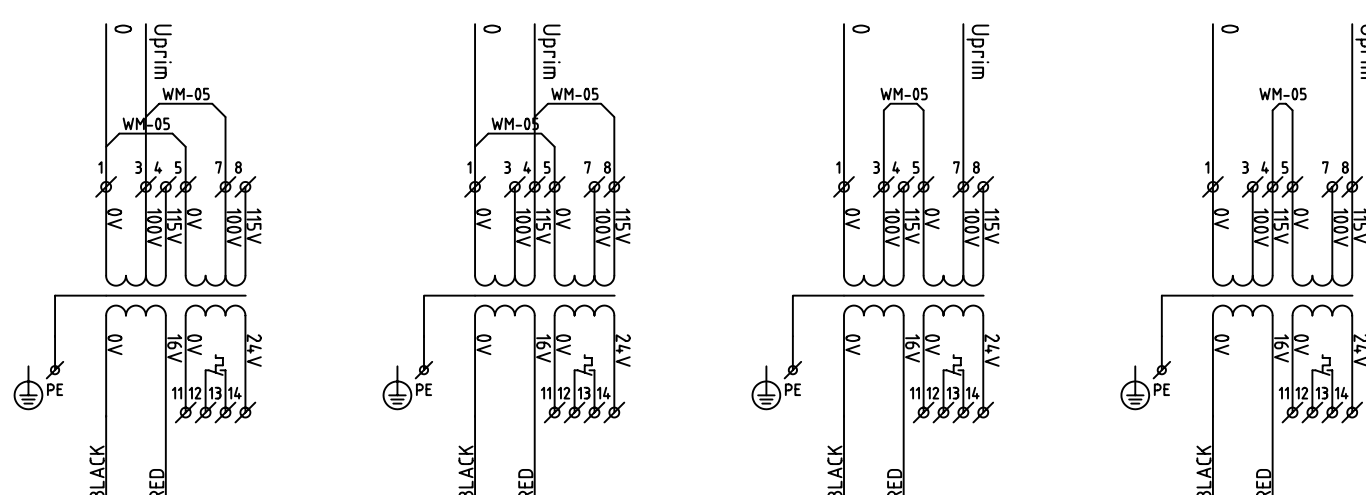


100 V

110-120 V

200 V

220-240 V



POS.	Qty.	NAME	ART.No°	DRW. No°	MATERIAL	DIMENSION
All dimensions in mm General tolerance ±0,5mm			DRAWN: P.S.		MAT. : -	
FORM: February 2002			DATE : 01-08-2013		DIM. : -	
NAME: Circuit diagram 1~ Table Top ES/DS/TS (16 V) 1 program			CHECK : -		REM. : -	
HFE VACUUM SYSTEMS Po. Box 2261 5202 CG 's-Hertogenbosch Phone : +31 (0)73 6271271 Fax : +31 (0)73 6271200			SCALE: -		FORM. A3	
			REV. -		REPLACED BY: -	
			DRW No° 8000-130801		REPLACES: -	

Input Connector 1



IC1: Input Connector 1		
Contact	Function	Wire/Color
1-a 1-b	Main 24 VAC	Blue White
2-a 2-b	Lid switch	Yellow Grey
3	Spare	-
4	Spare	-
5	Spare	-
6	Spare	-

OC2: Output Connector 2		
Contact	Function	Wire/Color
7	Common	White
8	Seal valve	Brown
9	Devacuum valve	Green
10	Spare	-
11	Spare	-
12	Spare	-
13	Spare	-

OC3: Output Connector 3		
Contact	Function	Wire/Color
14	Common	-
15	Pump contactor	Brown
16	Seal-1 contactor	Green
17	Spare	-
18	Spare	-
19	Spare	-
20	Spare	-

ALL DIMENSIONS IN mm TOLERANCE: According to DIN ISO 2768 Part 1-m and Part 2-K		DRAWN: H.W.		MAT: Default	
FORMAT: Oct 2008		DATE: 14-12-2010		DIM:	
NAME PCB 04		CHECK:		FINISH:	
Version: 1-Program		REM:		REPLACED BY	
HFE VACUUM SYSTEMS PO Box 2261 5202 CG 's-Hertogenbosch Netherlands Phone: +31 (0)73 6 271 271 Fax: +31 (0)73 6 271 200		SCALE: -		FORM: A3	
				REV	
		ART. NR		SHEET NR	
		DRW. NR		PCB 04-1	