

Love sun lounger

by Eugeni Quitllet

This chair collection, designed by Eugeni Quitllet for Vondom, is **inspired by the concept of love**, a feeling that involves body and soul, invisible to the human eye, but a wonderful embellisher of everything that surround us.

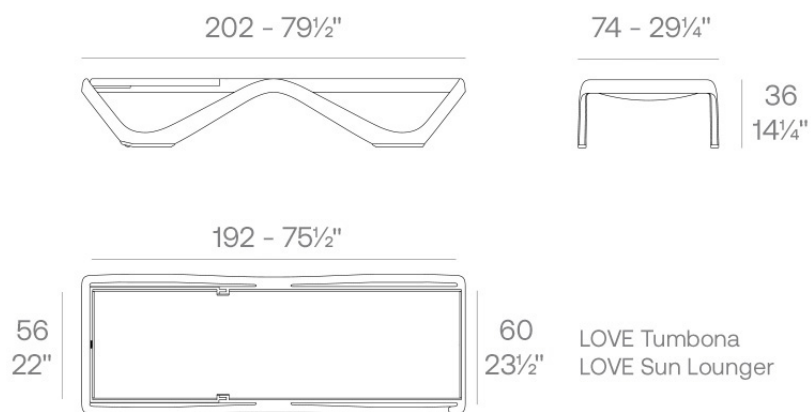


Info

Description

Made of injected polypropylene with mineral additives. Stackable. Available in several colors. Item suitable for indoor and outdoor use.

Weight: 13.5 Kg



Finishes

finishes

Basic

Ref. 65090

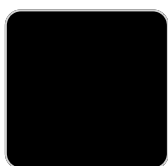


ecru

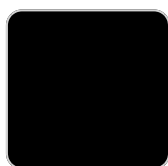
Available in various colors

kit lona

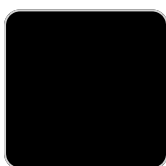
Ref. 65090KIT



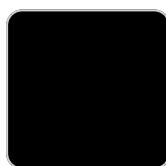
white



ecru



anthracite



tortora

fabric

BAIONA

Ref. 56027TCO

VONDOM



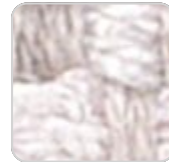
green 10110 baiona



ecru 10101 baiona



jade 10109 baiona



white 10100 baiona



brown 10108 baiona



garnet 10107 baiona



clay 10106 baiona



black 10114 baiona



camel 10104 baiona



gray 10113 baiona



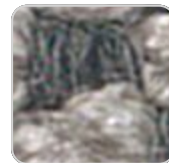
cream 10103 baiona



blue 10112 baiona



ocean 10111 baiona



tortora 10102 baiona

Group 1C. High density 100% acrylic fabric, which provides a solid feel. It has an irregular pattern that adds a handcrafted touch.

CALELLA

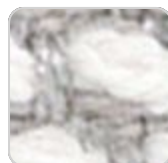
Ref. 56027TCO



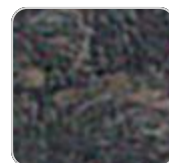
cream 10123 calella



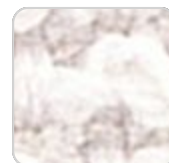
tortora 10122 calella



ecru 10121 calella



anthracite 10129
calella



white 10120 calella



gray 10128 calella



blue 10127 calella



jade 10126 calella



clay 10125 calella



mustard 10124 calella

Group 1C. PFAS-free 100% acrylic fabric with a rich and unusual texture and an exceptional softness, which enhances the comfort of the furniture.

FISTERRA

VONDOM

Ref. 56027TCO



cream 10132 fisterra



white 10130 fisterra



ecru 10131 fisterra



tortora 10135 fisterra



camel 10134 fisterra



peach 10146 fisterra



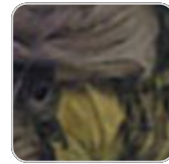
clay 10137 fisterra



garnet 10138 fisterra



brown 10136 fisterra



olive 10145 fisterra



jade 10139 fisterra



green 10140 fisterra



ocean 10141 fisterra



blue 10142 fisterra



gray 10143 fisterra



anthracite 10144
fisterra

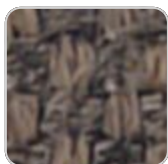


black 10147 fisterra

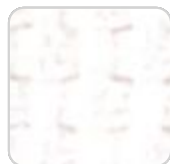
Group 1C. 100% acrylic fabric, with a distinctive irregular marbled pattern and a soft feel.

PORTONOVO

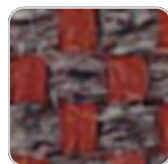
Ref. 56027TCO



brown 10158
portonovo



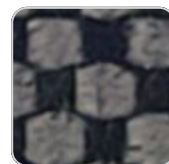
white 10150
portonovo



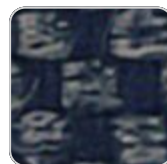
garnet 10157
portonovo



black 10165
portonovo



anthracite 10164
portonovo



VONDOM

clay 10156 portonovo



ocean 10161 portonovo

gray 10163 portonovo



cream 10153 portonovo

mustard 10155 portonovo



green 10160 portonovo

blue 10162 portonovo



tortora 10152 portonovo

camel 10154 portonovo



jade 10159 portonovo



ecru 10151 portonovo

Group 1A. 100% acrylic fabric, with a flat and simple design, which adapts to any decorative style.

ALTEA

Ref. 56027TCO



tortora 1102 altea



white 1100 altea



camel 1120 altea



clay 1122 altea



garnet 1106 altea



brown 1104 altea



jade 1125 altea



ocean 1123 altea



gray 1101 altea



anthracite 1124 altea



black 1105 altea

Group 1A. Soft outdoor fabric with leather-like texture.

AROUSA

VONDOM

Ref. 56027TCO



tortora 1209 arousa



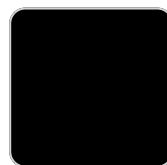
camel 1230 arousa



clay 1231 arousa



brown 1214 arousa



jade 1235 arousa



gray 1208 arousa



anthracite 1210
arousa

Group 1B. Soft outdoor fabric with shiny finish.

Ambients



